

OFFICIAL

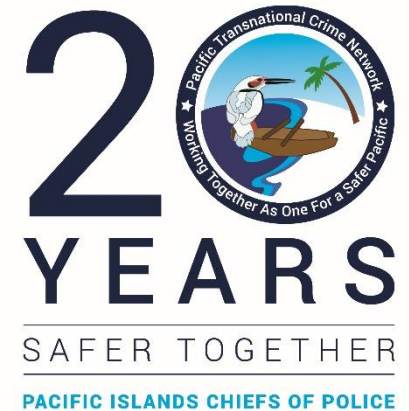
Countering Serious Organised Crime



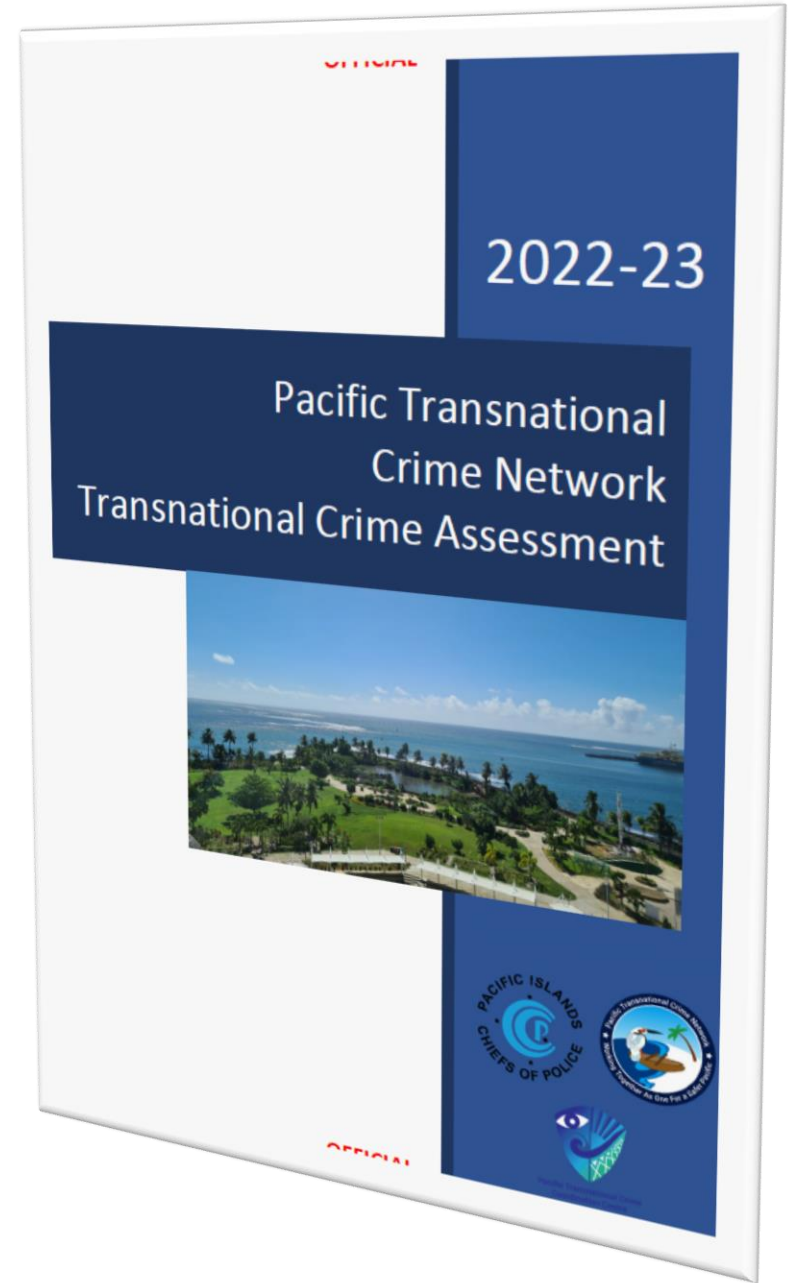
Pacific Transnational Crime
Coordination Centre

ptccc@ptccc.ws

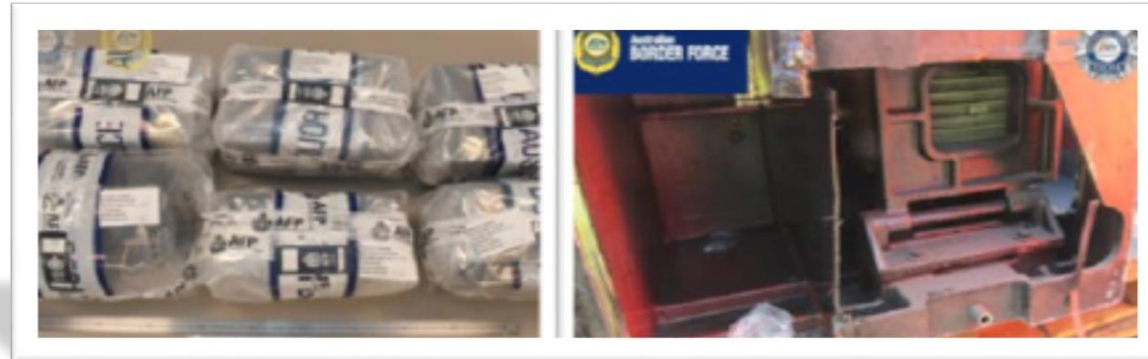
OFFICIAL



Introduction



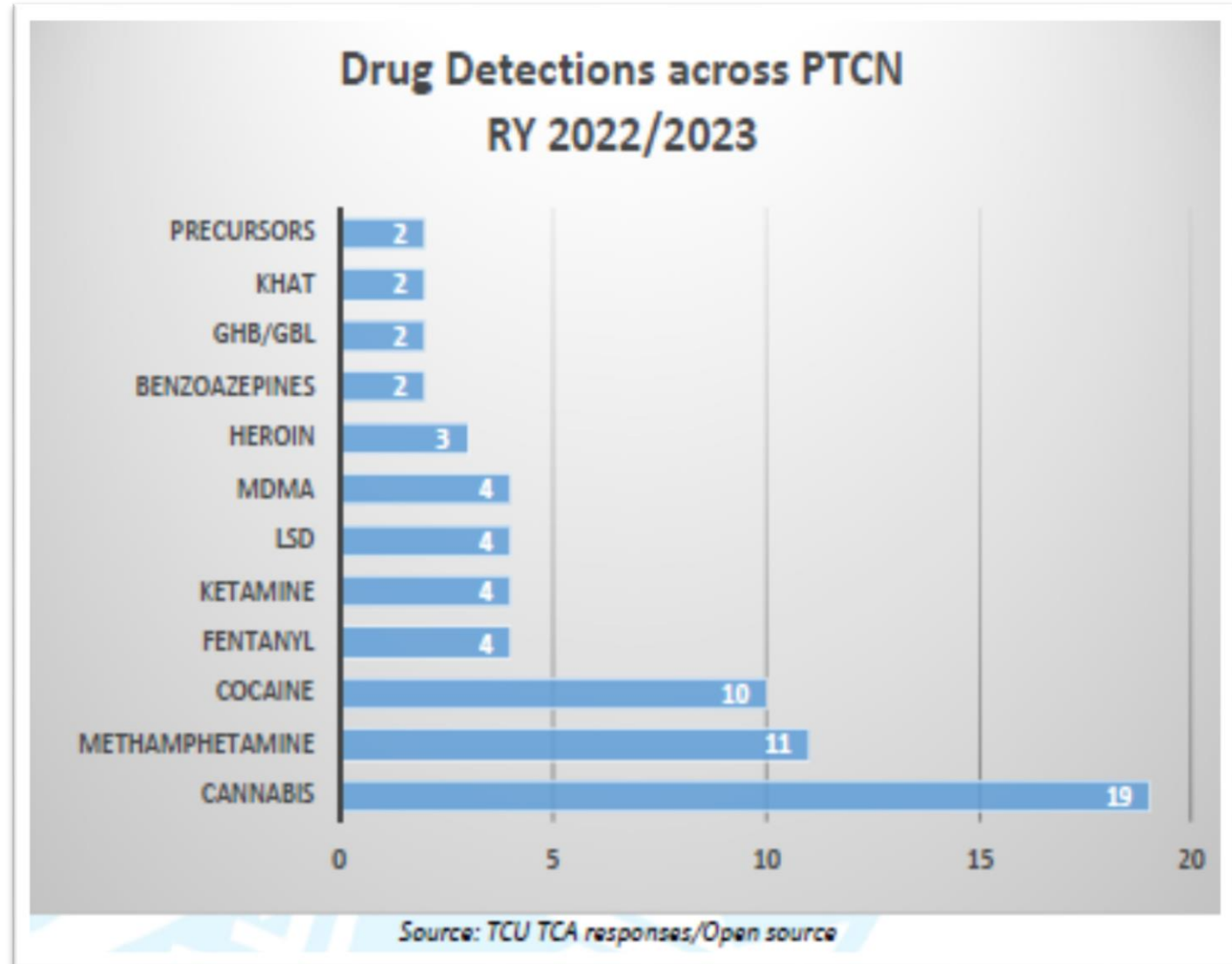
Illicit Drugs Overview



- Detections of multi kilogram consignments in the Pacific return:
 - 124 kg and 52 kg meth in PNG
 - 247 kg Cocaine* in Australia via PICs
- Methamphetamine intercepts indicates rising domestic use in PICs.
- Drug related police interactions often locate multiple illicit goods of interest.
- Sophistication of concealments continue to evolve.
- Detections of New Psychotic Substances (NPS).

Illicit Drugs Overview continued...

- Origin of hard drugs (meth and cocaine) continue to feature Central and South America though increasing note of North America and Europe.
- Cannabis and Methamphetamine saw seizures of more than a kilogram.
- Common intercept methods: Police interactions and mail intercepts.
- Methamphetamine clandestine lab detections reported in four PICs though in small numbers.
- Drug detections in 19 countries →



Illicit Drugs: Across the types



19 countries reported detections

Predominately domestic supply

Combined detection of 30kg across reporting TCUs



11 countries reported detections

Predominately imported

Increased domestic use in PICs



10 countries reported detections

Imported

PICs appear to remain primarily a transit area for cocaine

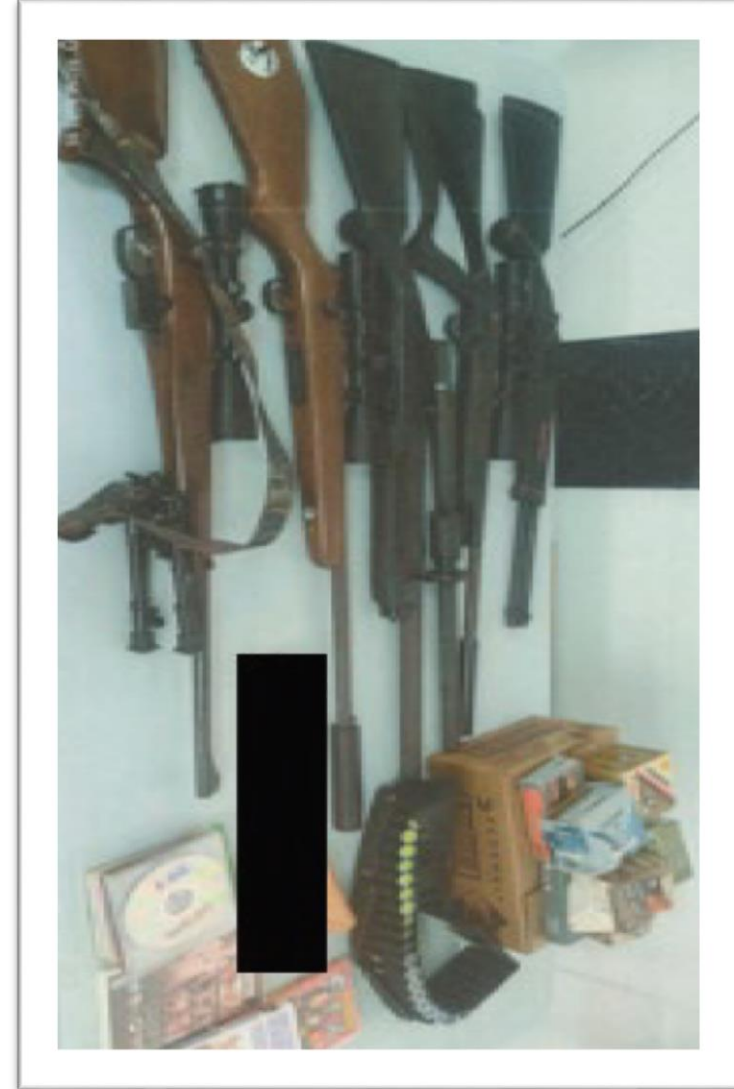
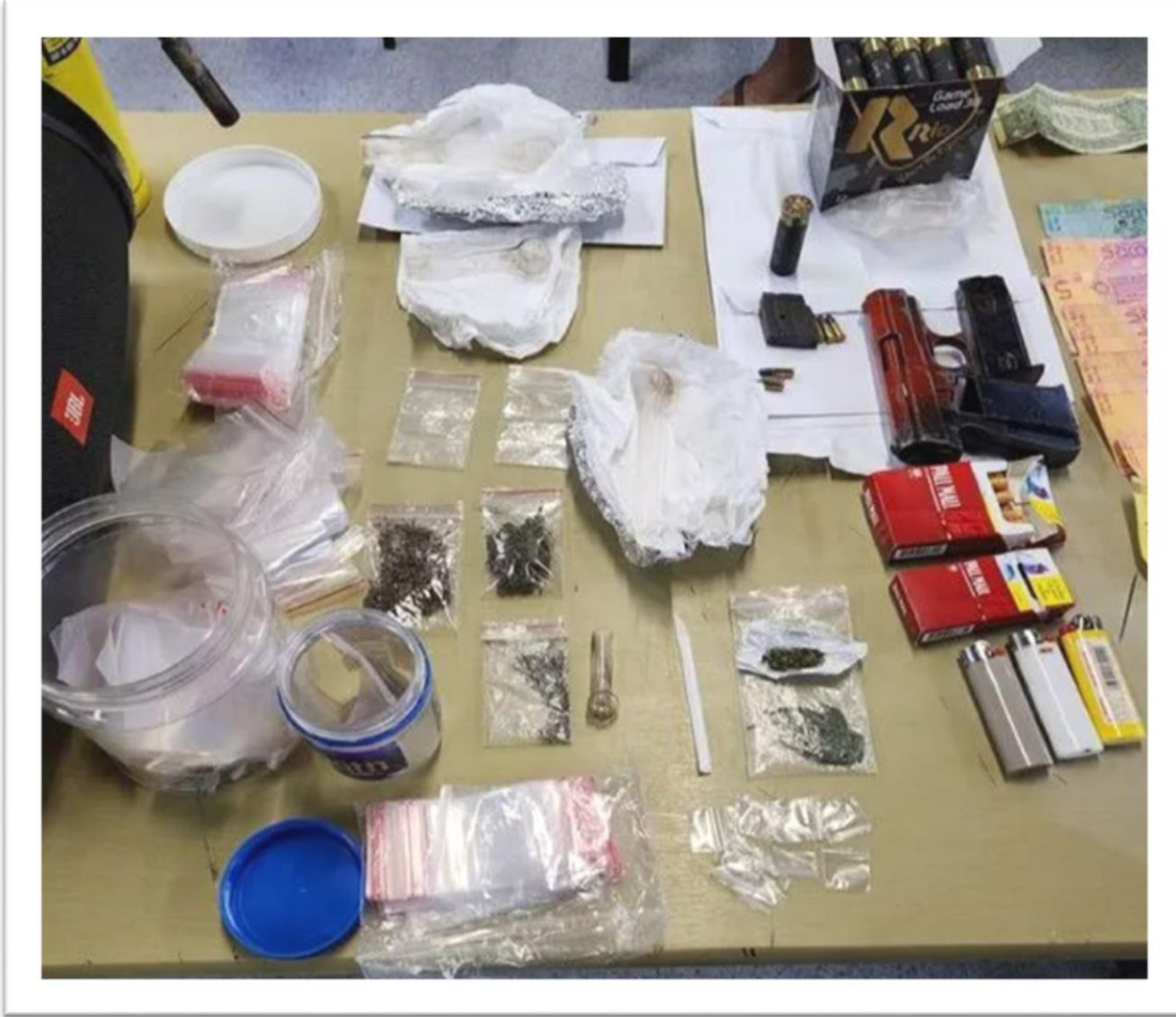


4 countries reported detections

Imported

Ketamine
Benzodiazepine
Opioids including Fentanyl
Plant Based Substance

Illicit Weapons



Organised Crime

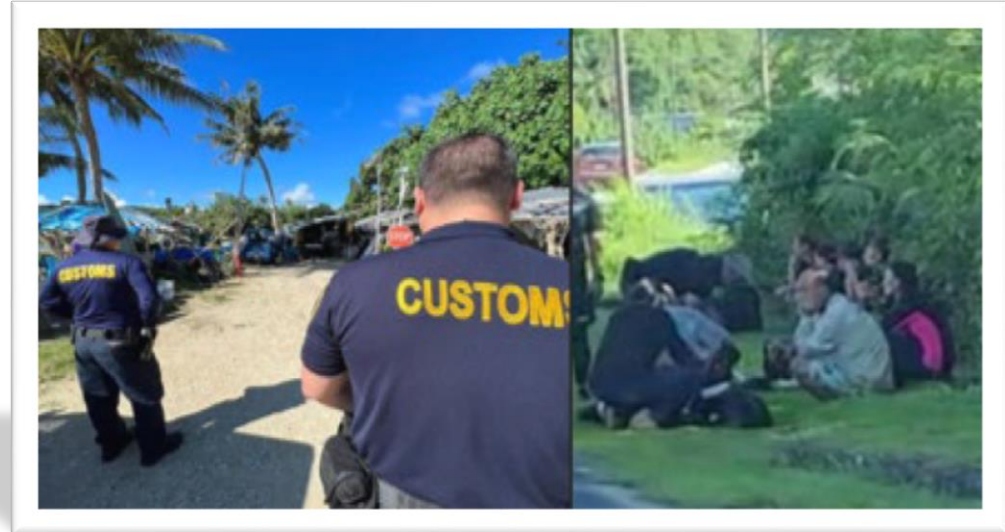
The screenshot shows the top of a news article on the Stuff website. The header includes the 'Stuff' logo and navigation links for 'NZ NEWS', 'QUIZZES', 'SPORT', 'WORLD', and 'LISTEN'. The main headline reads: **'No entry': Fiji government warns New Zealand criminal gangs**. Below the headline, the author is identified as 'Christine Rovoi' and the publication date is 'April 18, 2023. · 06:00am'. A 'Share' button is visible in the bottom right corner.



Human Trafficking, Smuggling and Exploitation

Available reporting notes:

- Cases of potential trafficking or exploitation.
- Reporting continues for Regional Seasonal Employees (Pacific workers hired for agricultural/ manual labour work) of instances of exploitation.
- Vanuatu passport citizenship – full suspension of visa free travel agreement since last year.
- Going forward key areas to combat a difficult to detect crime type:
 - Agencies working together
 - Education
 - Awareness



OFFICIAL



Faafetai tele lava

ptccc@ptccc.ws

OFFICIAL



Pacific Transnational Crime
Coordination Centre

